

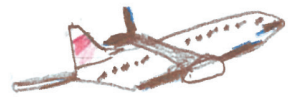


ISS Program

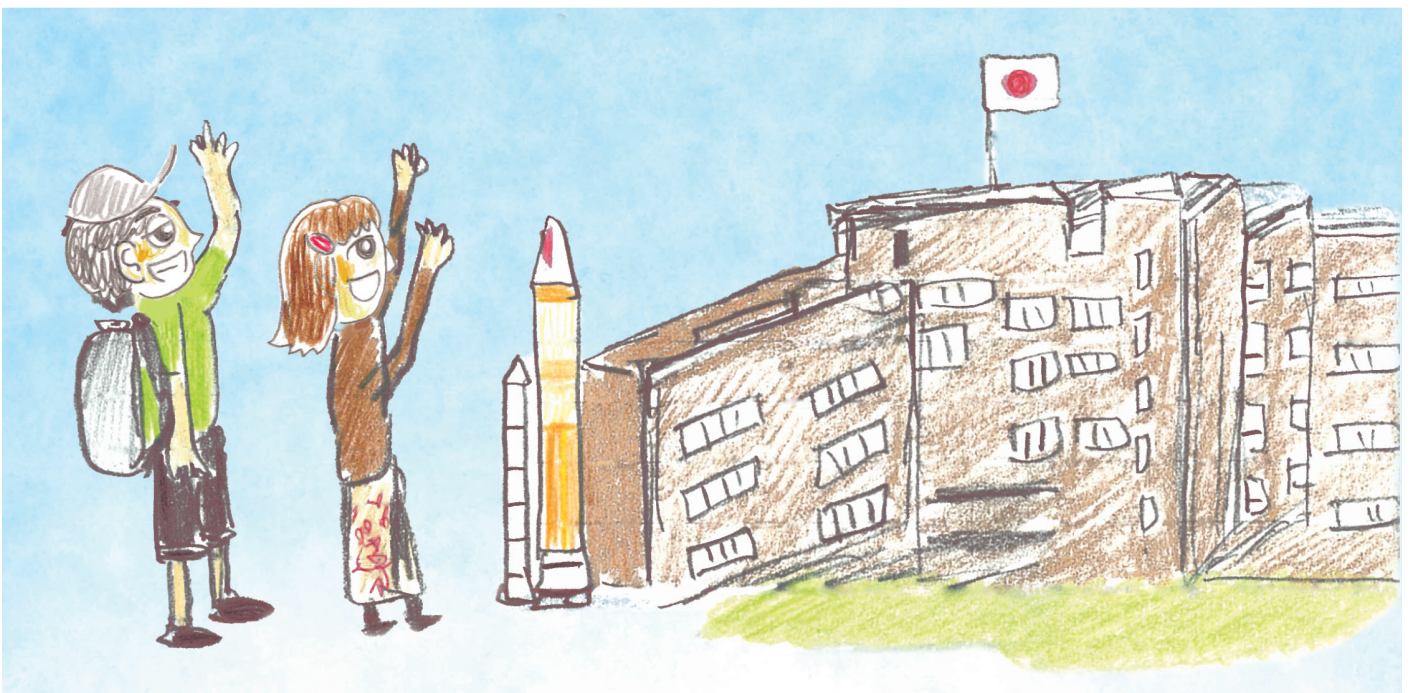
— Inclusive Smart Society Program —
(Joint Academic Program with Ohio State University)



I **N** **C** **L** **S** **I** **V** **E** **S** **M** **A** **R** **T** **S** **O** **C** **I** **E** **T** **I**



P **R** **O** **G** **R** **A** **M**

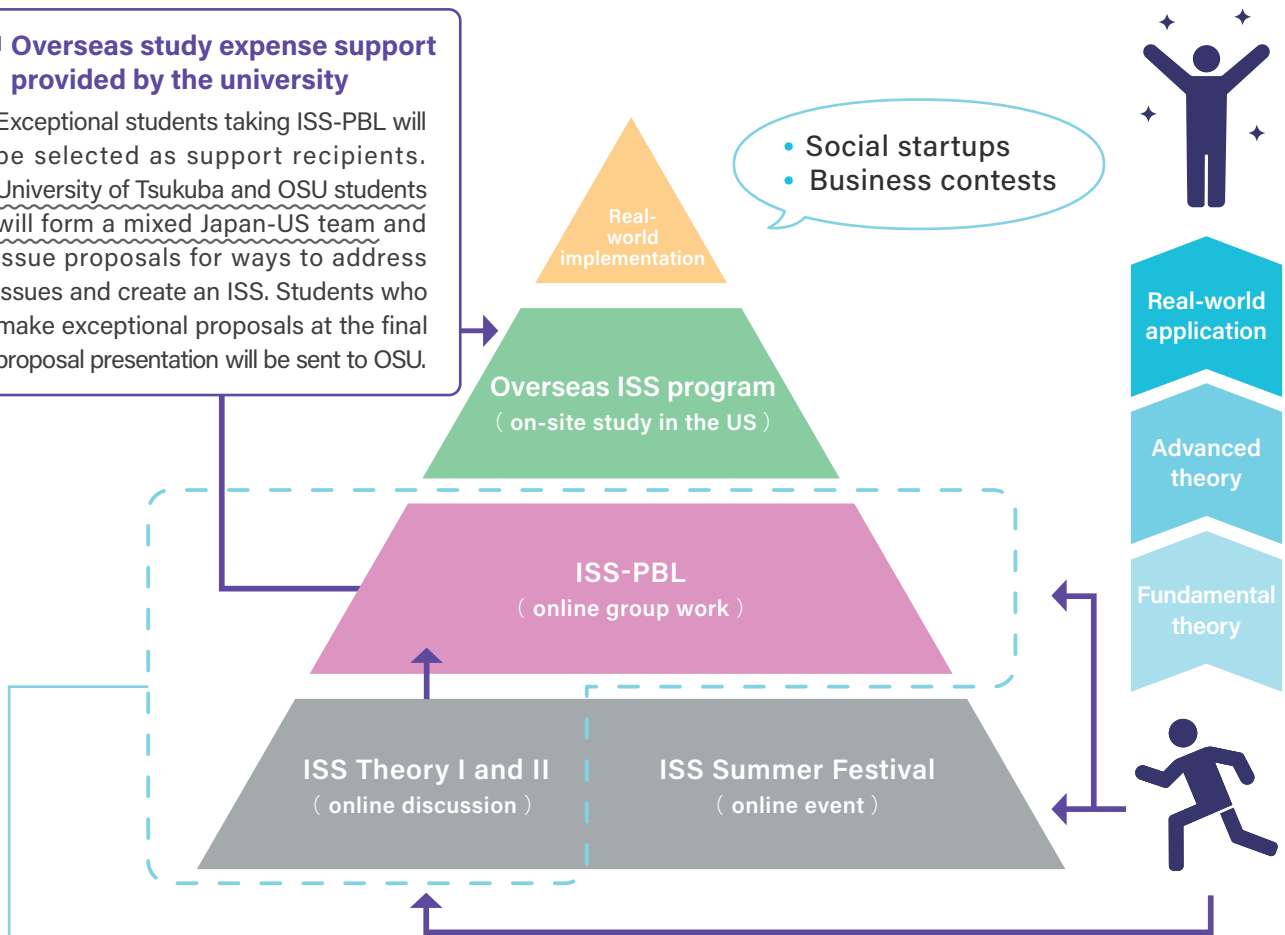


A program that connects the world

The ISS program is an educational program for developing global social start-up personnel. Conducted in conjunction with Ohio State University (OSU) in the U.S., it aims to produce people who use innovative technology to create an inclusive smart society in which people with diverse backgrounds, including age, gender, nationality, language, and physical ability, all play equally vital roles.

■ Overseas study expense support provided by the university

Exceptional students taking ISS-PBL will be selected as support recipients. University of Tsukuba and OSU students will form a mixed Japan-US team and issue proposals for ways to address issues and create an ISS. Students who make exceptional proposals at the final proposal presentation will be sent to OSU.



- Comprehensive courses (bachelor's degree basic courses)
 - Introduction to ISS I : Fall AB, theory lectures
 - Introduction to ISS II : Fall C, application lectures
 - ISS-PBL : Fall C, lectures + project-based learning

■ Classes taught in English

Participants will develop solid English language abilities !

■ On-demand courses

Classes are streamed through the new JV-Campus platform !

■ Meet and work with OSU students

Engage in chat discussions as part of the Introduction to ISS courses !
In ISS-PBL, University of Tsukuba students will form teams with OSU students and work together!

What is the ISS Summer Festival ?...

It's an online, virtual festival that includes e-sports, dance, music, art, and more, all of which can serve as case study material

Lectures on the fundamentals of ISS, focusing on people, technologies, governance, and policy

Course number	1290181
Course name	Introduction to Inclusive Smart Society I

Comprehensive course (bachelor's degree basic course)
/ 1credit / Fall AB as required

Lectures that develop students' ideas, knowledge, and skills at turning the theories of ISS into reality through case studies in areas such as popular culture, comparative religion, and sports

Course number	1290191
Course name	Introduction to Inclusive Smart Society II

Comprehensive course (bachelor's degree basic course)
/ 1credit / Fall C as required

University of Tsukuba students and OSU students form mixed teams in project-based learning focused on the realization of ISS

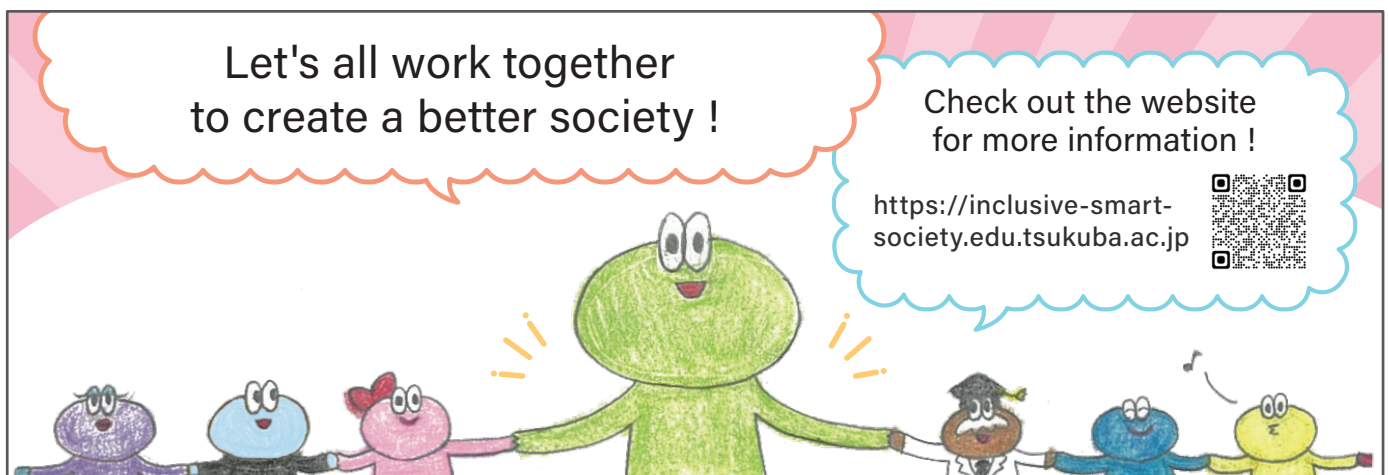
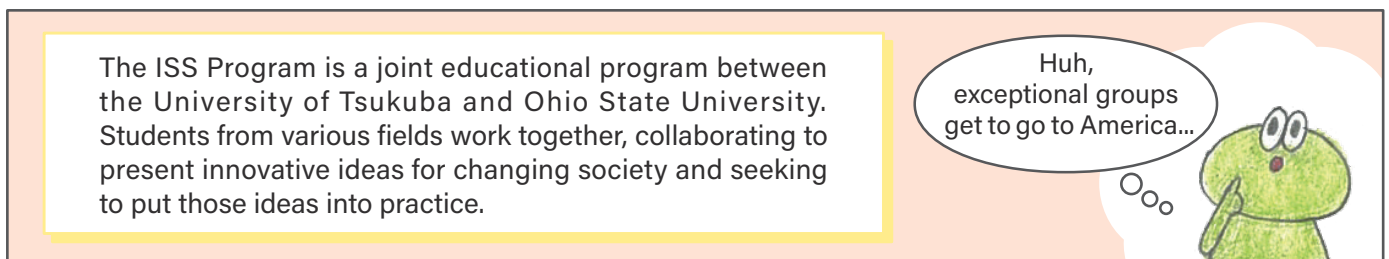
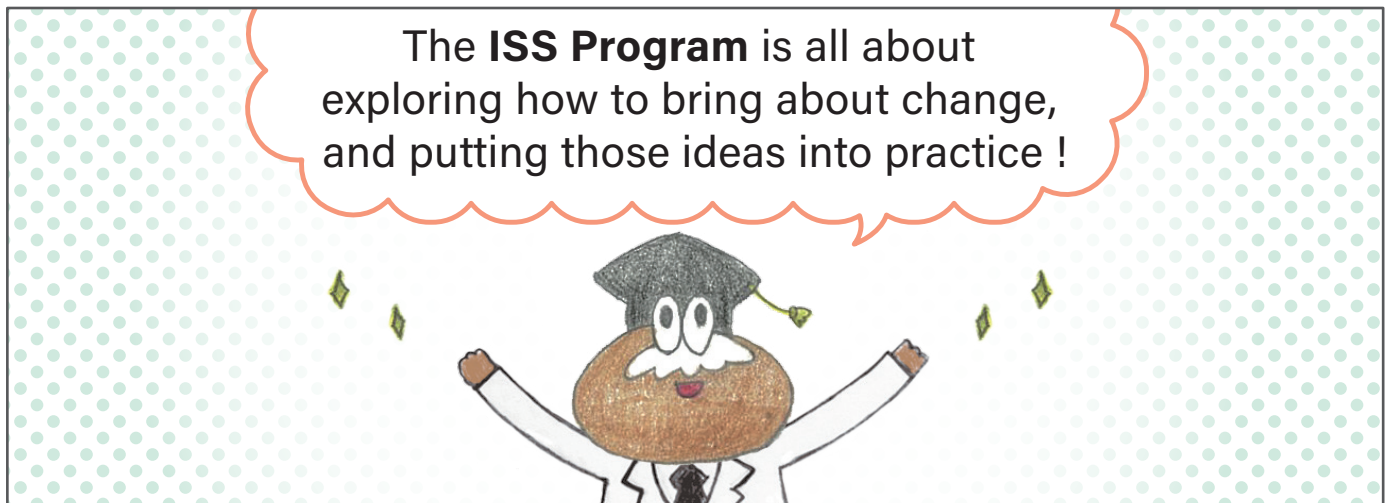
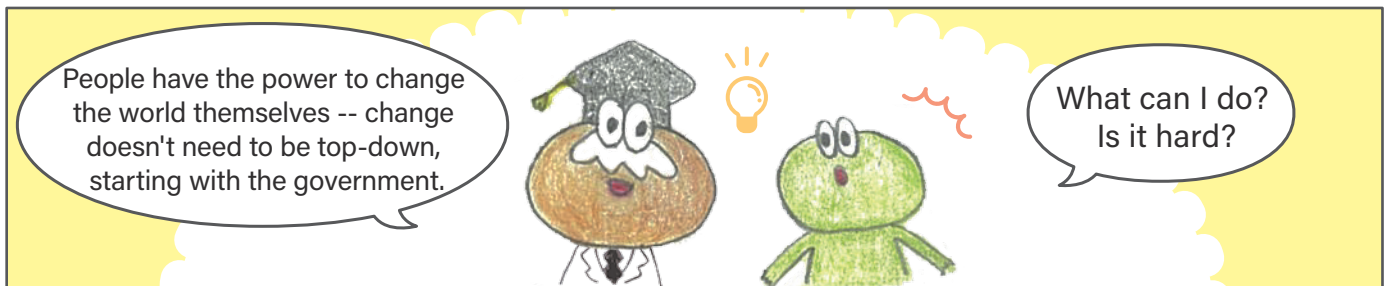
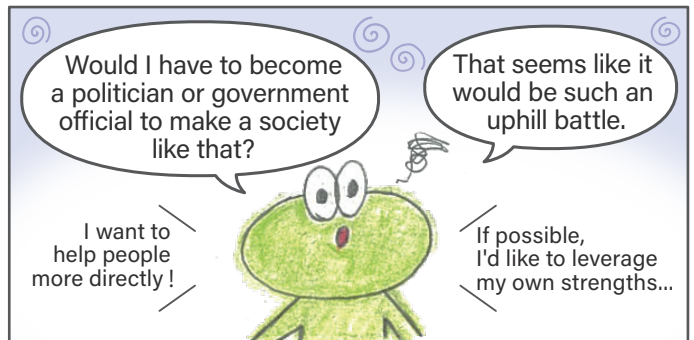
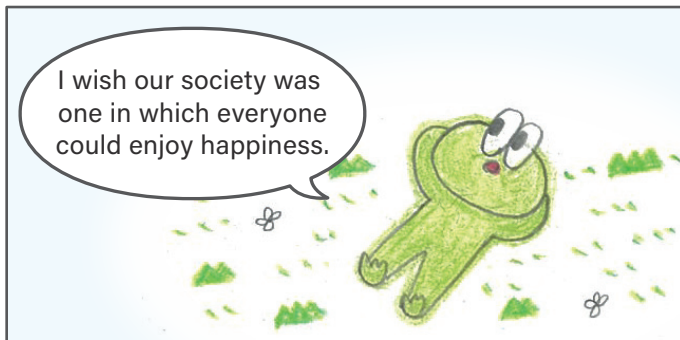
Course number	1490014
Course name	Inclusive Smart Society PBL

Comprehensive course (bachelor's degree basic course)
/ 1credit / Fall C as required

PBL : Problem / Project Based Learning. An educational method in which students learn the processes involved in deeply exploring a problem and applying their knowledge to solve it.

* While the PBL course can be taken on its own, this course is based on the material studied in Introduction to ISS I and II, so students are recommended to take Introduction to ISS I and II first.

The Objectives of the ISS Program



Check out the website for more information!

<https://inclusive-smart-society.edu.tsukuba.ac.jp>

